

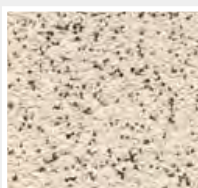
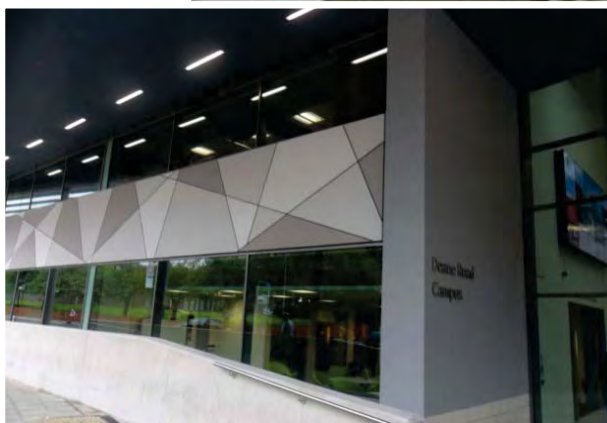
STONE MIST™



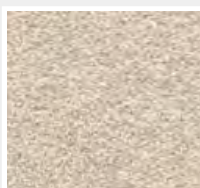
Stone or reconstituted stone, like brick, is heavy and energy intensive to find, produce, and transport. Stone Mist is a more refined finish than its sister products, TerraNeo and Ameristone. Whether you are striving to create a solid, upscale appearance for an exterior or unique and durable finish for an interior, Stone Mist will enhance a building's value by adding both style and substance to it.

Stone Mist is coloured quartz aggregate finish premixed in acrylic binder, which provides a natural stone appearance at a fraction of the cost of its natural and recon alternatives. Like all Dryvit finishes, Stone Mist is highly versatile. Use it as a finish for any Dryvit external wall insulation systems or directly applied to properly prepared substrates such as masonry, render or interior drywall.

Stone Mist is available in a range of standard colours but can also be matched to stone or recon stone.



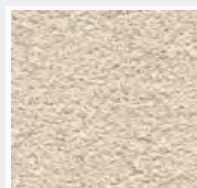
Castle Gray
101 SM



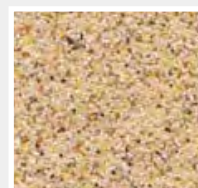
Wedgwood Gray
102 SM



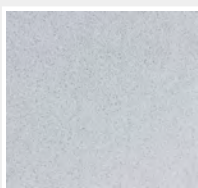
Cinnamon Toast
105 SM



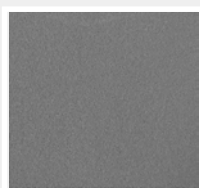
Morning Fog
108 SM



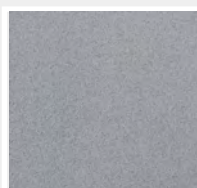
Golden Sunrise
109 SM



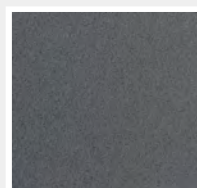
Beach Stone
111 SM



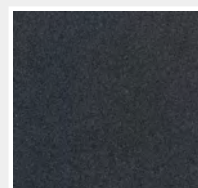
Earthy Gray
112 SM



Boulder Rock
113 SM



Mountain Cliff
114 SM



Cast Iron
115 SM